



UTEC

UTEC Co., Ltd

is a professional Lighting solution and Equipment supplier; Smart Hotel - Guest Room Management System - GRMS; Smarthome solution.

In the period of strong construction industry, the lack of professional technology contractors. **UTEC Co., Ltd.** was established with the desire to bring to our customers the best products and services, to meet the needs of customers with high quality and reasonable prices with the best care throughout. process using.

At **UTEC**, we always research and develop new technologies to provide our customers with the best life experiences. Our products are imported directly from Europe of famous brands such as: **O/M (Portugal)**, **ROVASI (Spain)**, **RIZO (China)**, **Helvar (Finland)**, **Siemens (Germany)**, **Simon (Spain)**, ... our's target is to become a leading and reliable company in the field of providing high quality lighting products and solutions in the Vietnamese market.

together with a technical team of highly specialized, experienced, honest, constantly innovating, improving and approaching scientific achievements, applying the quality management process in the management and operation of the system. as well as supplying products to customers, to strictly control and ensure the best product quality for all projects. We consider the stable and efficient operation of the project and the success of our customers as the success of our Company.

“Light is the essence of visual storytelling. From painting to cinema, it charges emotions, sets the tone, directs focus, and alters position in space and time. A flare at a glance, the shade that creates volume: light is the raw material for building your story.

We are provides the key to a toolbox so versatile that there is no limit to what the creator can achieve. Developed with designers, architects, engineers, these are the precision tools eto light stories in human spaces. We are researches the future of light, with new ideas for lighting spaces in an intelligent and innovative way”

CEO



VN: **CÔNG TY TNHH THƯƠNG MẠI VÀ KỸ THUẬT UTEC**
EN: **UTEC TECHNICAL AND TRADING COMPANY LIMITED**
Abb: **UTEC Co., Ltd**
Registration No.: 0401826121
Founding: 14/04/2017
Add: No. 264-266 March 29 street, Hoa Xuan ward,
Cam Le district, Da Nang city, Viet Nam
Hotline: (+84) 901 050 060
Email: utec@utec.vn
Website: <https://utec.vn>
Represented by: **Đặng Văn Rin**
Position: Director
Bank: Vietnam Export Import Commercial Joint Stock Bank
Branch: Eximbank Southern Da Nang
Account No.: 160080700172425
SWIFT/BIC: EBVIVNVX

"MY PRODUCTS, YOUR VALUE"



PARTNER

O/M

RiZO

ROVASI
Positive Lighting



UTEC



Helvar

SIEMENS
Ingenuity for life

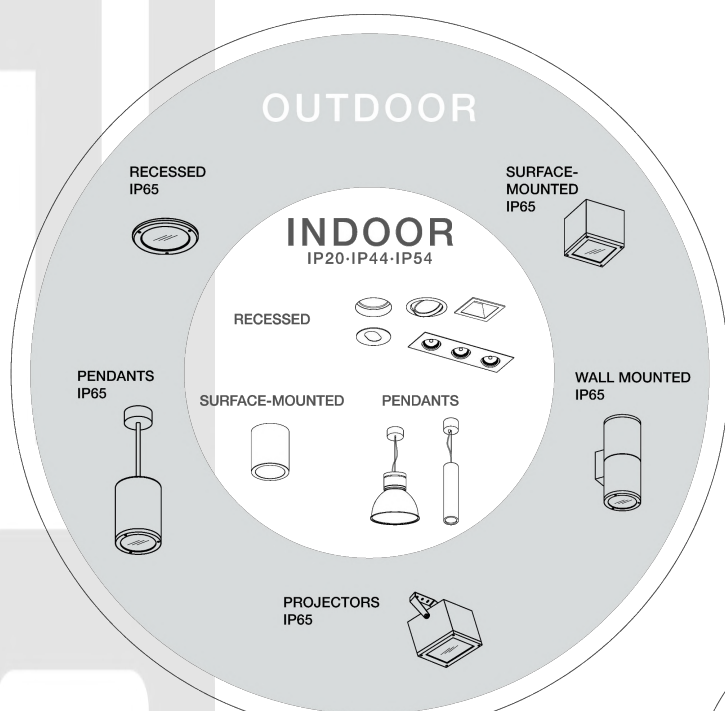
legrand

INTRODUCE

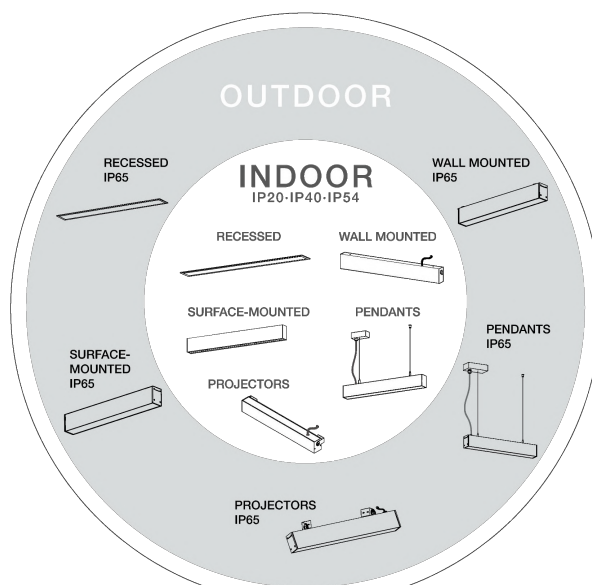
- O/M** is a brand owned by Osvaldo Matos SA. in **Portugal**, its origins can be found in more than 50 years of experience in manufacturing lighting fixtures. It was a long journey marked by two fundamental approaches: close collaboration with architects, engineers and designers to manufacture customized solutions for each project, and a constant desire to excel.
- RiZO** is a pioneering technological product in the field of modern and environmentally friendly lighting according to the criteria of "**Anti-Light Pollution**". We always bring exquisite and aesthetic products. We work with many groups of architects to research and design feature products. Along with that is the smart lighting control solution to bring value to the user.
- ROVASI** is a brand in **Spain**, designs and manufactures architectural and commercial lighting solutions ranging from interior lighting fixtures to complex exterior fixtures. We design and produce luminaires that are ahead of constantly changing trends and demands.
- FIBERLI** PSL Electronic, which is the first Turkish company that applies Fiber Optic lighting systems in **Turkey** as a manufacturer, was established in Antalya 1991. Our company, which concentrated on "**Professional Light**" systems.
- LOOP** as **Decorative** lamp mainly to accommodations, hotels, cafe & restaurants and wholesale and retails companies. We are glad to present our expertise and experience on lamps inspired by different cultures. We proudly say that our all models are truly original handmade and have flawless metal and brass works and perfect glassworks.
- HELVAR** is a brand in **Finland**, with 101 years experience innovations and leadership intelligent and energy-saving lighting solutions. Intelligent lighting is essential to the wellbeing of employees, customers, visitors, patients, ... Helvar solutions help to create smart environments built for the future, as "**Human Centric Lighting**". Optimally lit spaces enhance your wellbeing, increase your productivity, and make you feel good.
- SIEMENS** Established in 1847, **Germany**. We want to bring to customers the intelligent lighting control solution, control and management solutions for hotels and luxury apartments - GRMS (Guest Room Management System) – RCU.
- LEGRAND** is a brand in **France**, a global specialist in electrical and digital building infrastructures founded in 1860, offering high value-added products and solutions for commercial, residential and industrial spaces.

LIGHTING

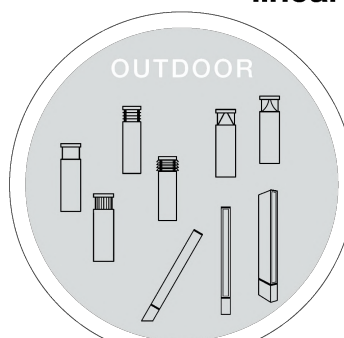
Leading the trend of integration and development in the field of lighting, we always bring to customers a variety of products, designs with the most optimal technical characteristics in the field of modern lighting. suitable for all projects requiring the most advanced with the most reasonable price.



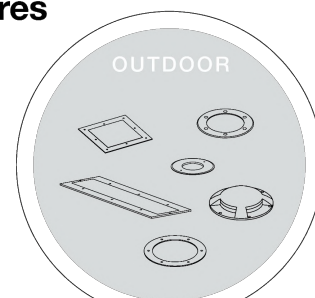
downlights



linear fixtures



bollards IP65



uplights IP67-68



custom made

SHOWROOM



LIGHTING SOLUTION

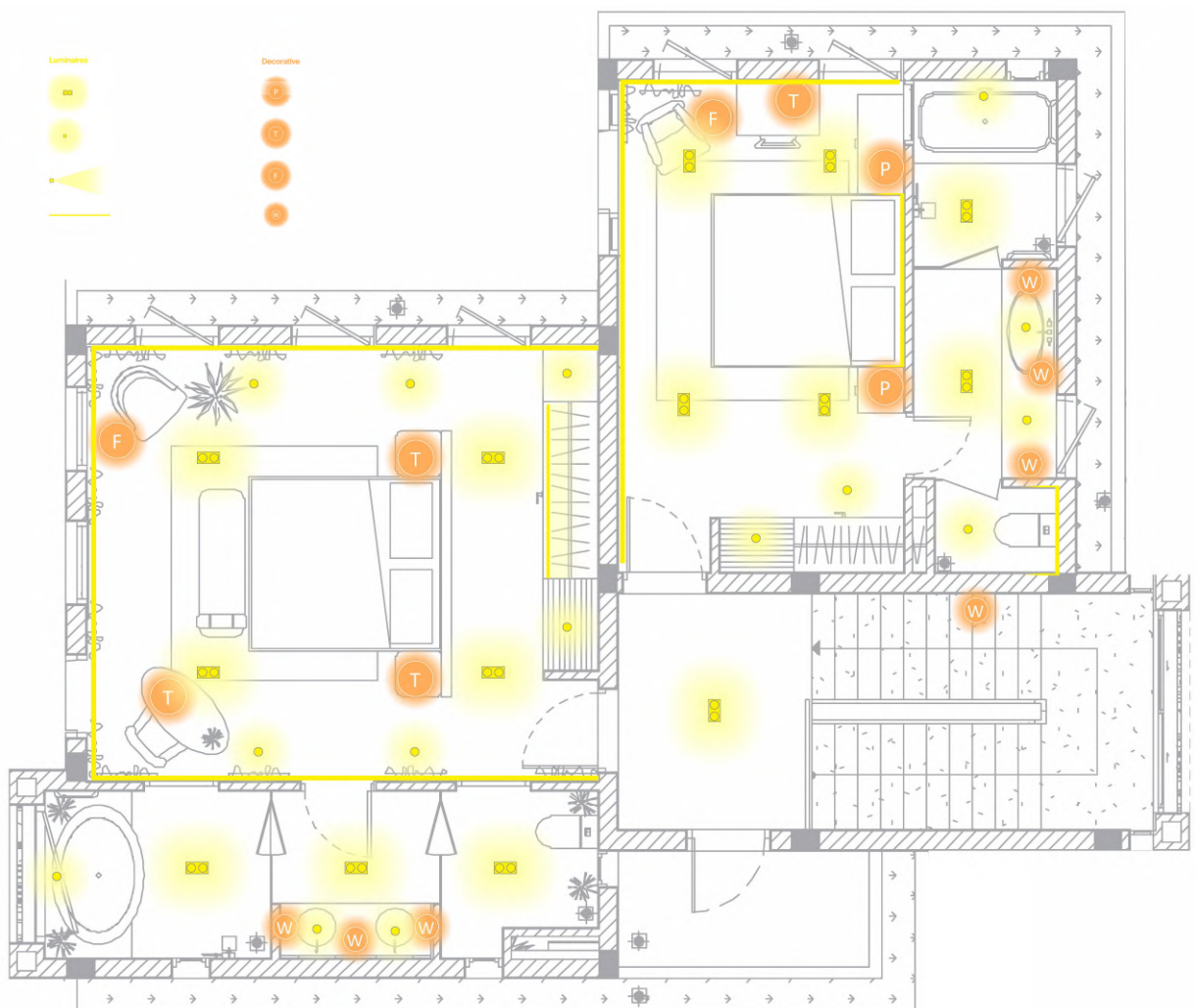
LIGHTING DESIGN

Light is the essence of visual storytelling. From painting to cinema, it charges emotions, sets the tone, directs focus, and alters position in space and time. A flare at a glance, the shade that creates volume: light is the raw material for building your story.

We provide the key to a toolbox so versatile that there is no limit to what the creator can achieve. Developed with designers, architects, engineers, these are the precision tools to light stories in human spaces. We research the future of light, with new ideas for lighting spaces in an intelligent and innovative way.

UTEC supports you in all your lighting projects with its network of highly skilled representatives and consultants, as well as a range of manufacturing services for tailoring products to meet your exact needs.

We provide professional lighting solutions, from concept design to detail and complete lighting project implementation.



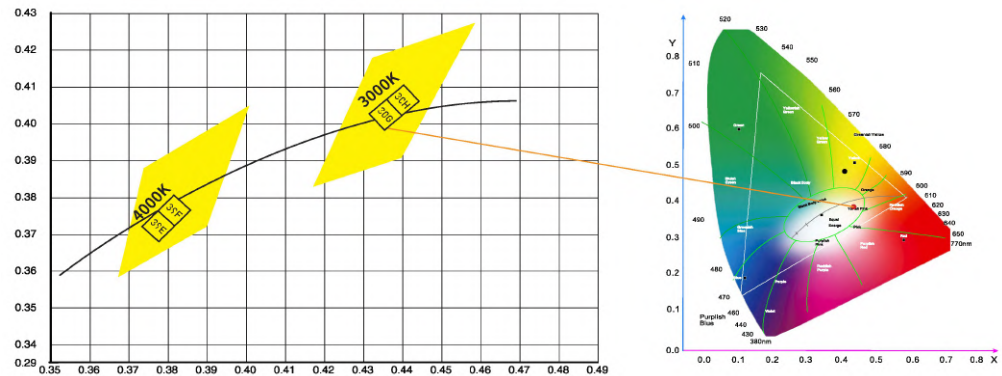
LIGHTING SOLUTION

LIGHTING PRODUCT

At **UTEC**, We we always bring new technologies to provide our customers with the best life experiences.

White Color Management

The Chromaticity lighting is controlled with the best LED binning which is finer than the international standard ANSI.



Color Rendering Index

Light source with CRI of 90 or higher is excellent for color rendering.

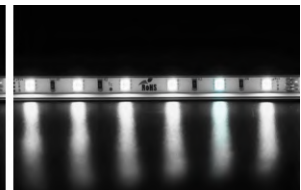
CRI 90



2-step Mcadam



3-step Mcadam



Up to CRI 97

Color Temperature (CCT): is the colour of light.



LIGHTING SOLUTION

Color Temperature (CCT)

You will not need a daylight only if you live in the tropics or a room of diamond.

The warm colour will make you feel warm and comfortable and make people look more beautiful.

If you don't believe it, just have a try!.

Glare Solution: Anti-glare Reflector

A light hidden and unseen but fully lighting up the space.

Experience the magic of Anti-Glare Reflector technology.

The Anti-glare Reflector is technology to improve the quality of light in harmony with visual comfort. It helps to protect human eyes from glare coming out from bright light source and minimize visual stress we put our eyes through every day.

The innovative Anti-glare Reflector creates space providing best comfort for your eyes.

LIGHTING CUSTOMIZATION

UTEC focuses on custom products for luxury lighting products.

We always consider aesthetics along with quality and good materials as the key to our products.

The durability of the product along with the harmony of the structure, creates aesthetic value and sustainability for the product.

We create unique value for each product to satisfy customers.



LIGHTING SOLUTION

TECHNOLOGY FOR LIFE

At **UTEC**, We have the ability to apply and integrate many of today's most advanced technologies to bring true value in the field of lighting, in order to bring users the best values.

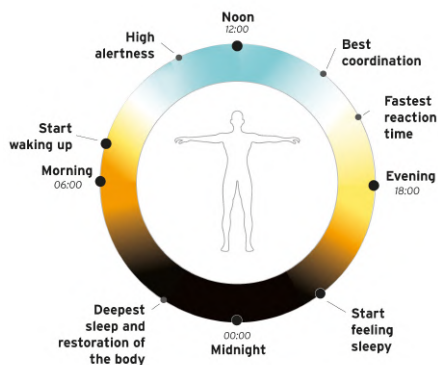
Not only light but also experience in lighting.

Tunable White Solution (TW)

Tunable White technology provides the benefit of the natural light for better health condition and sleep.

The color temperature of TW can be tuned from 2700K~6500K.

TW technology can control the light color temperature with lighting control system to provide warm and cool atmosphere for different occasions, you can create multi-functional spaces well adapted to both day and night time, fully in-sync with modern lifestyle.



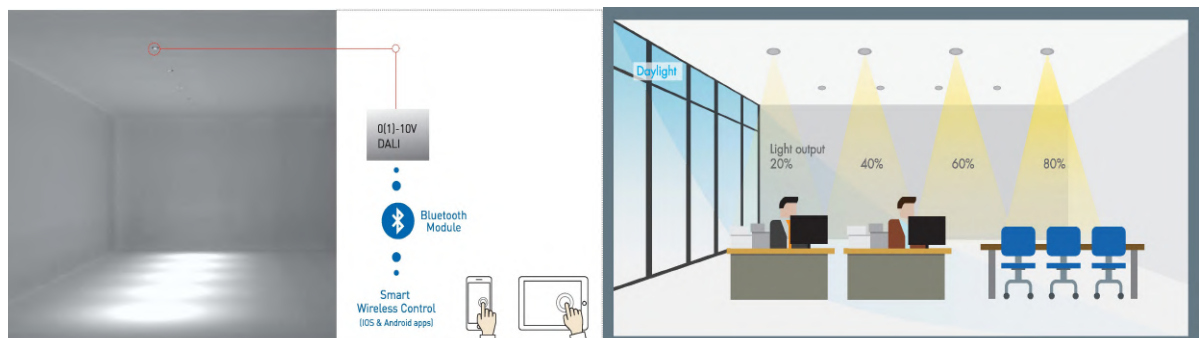
Lighting control Solution

Get a taste of the future with intelligent light technology.

Easy and Economical optimum conditions.

The Dimming system does not need any additional connection for dimming.

Led driver is linked with integrated sensor on the fixture to follow the dim command in accordance with standard setting.



LIGHTING SOLUTION

SUSTAINABILITY

Humanity & Nature

Our product with design on optics for anti glaring safety of the human eye, ensuring that we protect the human eye in a reasonable environment.

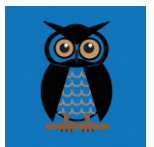
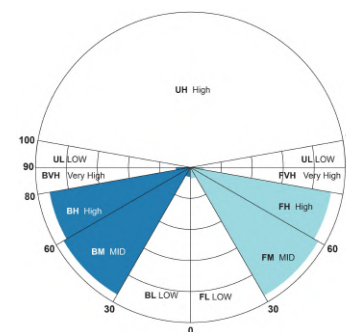
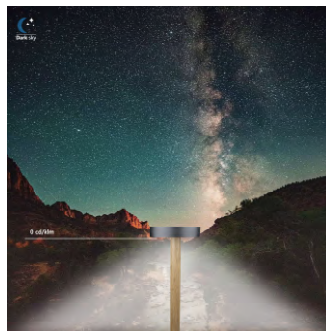
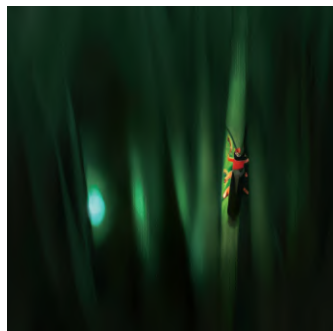
We can provide low color temperature (including low blue light) products with dimming options to avoid disrupting the natural survival of animals and plants.

Using optical design to improve product lighting efficiency and usage rate, can reduce product qty in some certain areas, saving energy.

Can provide 10 years product maintenance service.

Can provide product upgrade solution without replacing fixture.

Some products use bamboo steel as accessories, high intensity, high tenacity, corrosion resistance and reproducible. Bamboo steel is a kind of materials of recombinational with high technology, can promote green development. Bamboo steel can be also used to replace wood and plastic.



Light Touch



Dark sky

The luminaire with “Dark Sky” series throws its light with high efficiency.

The BUG rating according to IES TM-15-07 and the CEN Flux Code in compliance with EN 13032-2.

B acklight – the light behind the luminaire

U plight – the light above the luminaire

Glare – glare factor

The lumen ratings measured are classified on a scale from 0 (low) to 5 (high).

Meets most green certification requirements worldwide.

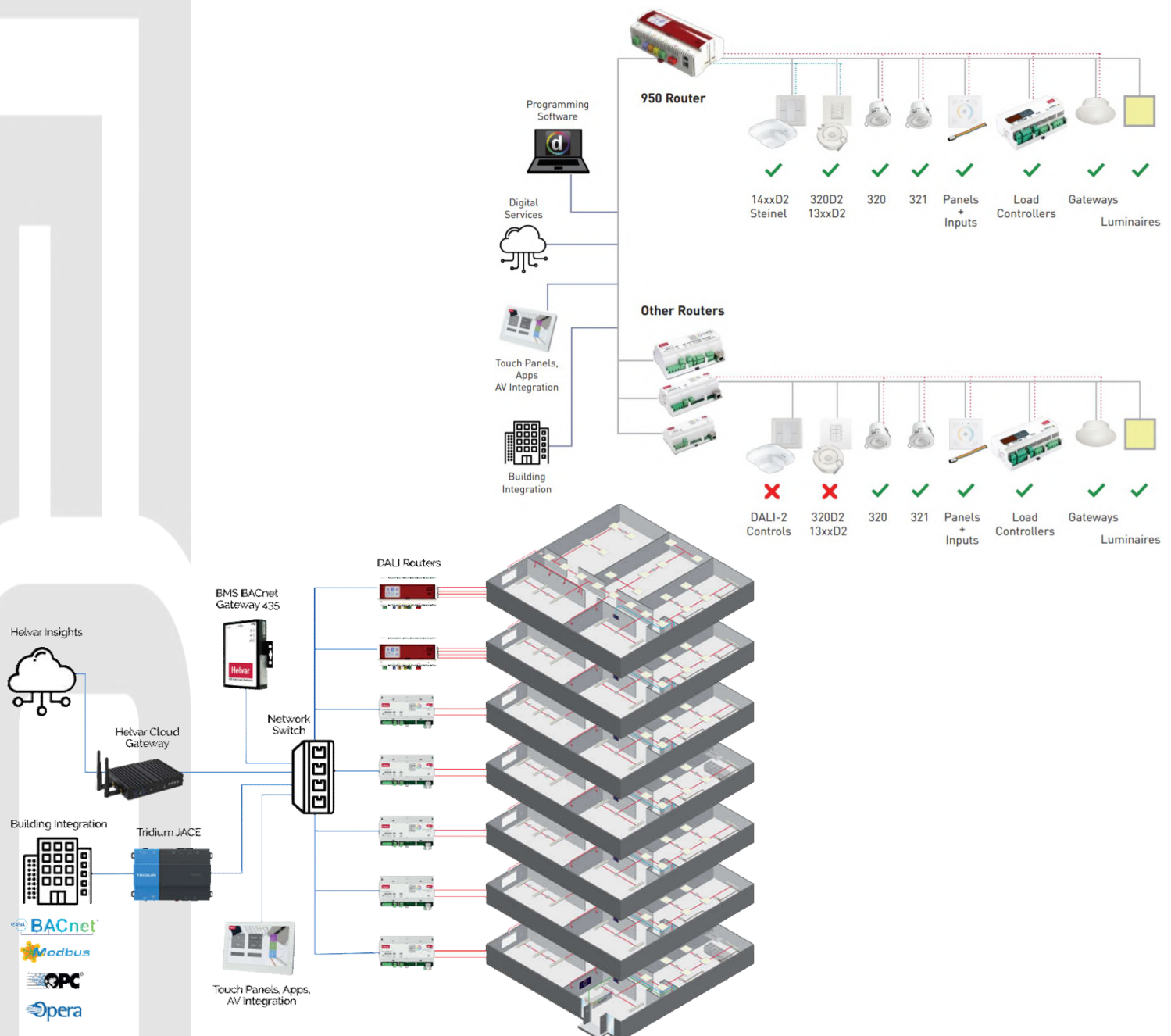
LIGHTING CONTROL

Light brings value to life, lighting is not just turned on and off, but lighting must follow biological life occasion, bringing the most comfortable feeling for users. We have developed a variety of lighting control and lighting solutions, the lighting system not only serves light, but also entertainment, relaxation, and life, controlled by scenario, increasing or decreasing with one touch, ... using famous equipment imported from Europe of major brands such as: Helvar, Siemens, Simon, MDT, JUNG, ... brings durable quality and flexible control.

IMAGINE ROUTER SYSTEM

Lighting management is increasingly becoming an important element of intelligent construction. Service and monitoring of lighting from the level of the building management system enables quick access to current energy consumption, working hours and error messages.

Automated lighting control in the building improves energy efficiency at the same time increasing the user's work comfort.



GRMS - Guest Room Management System

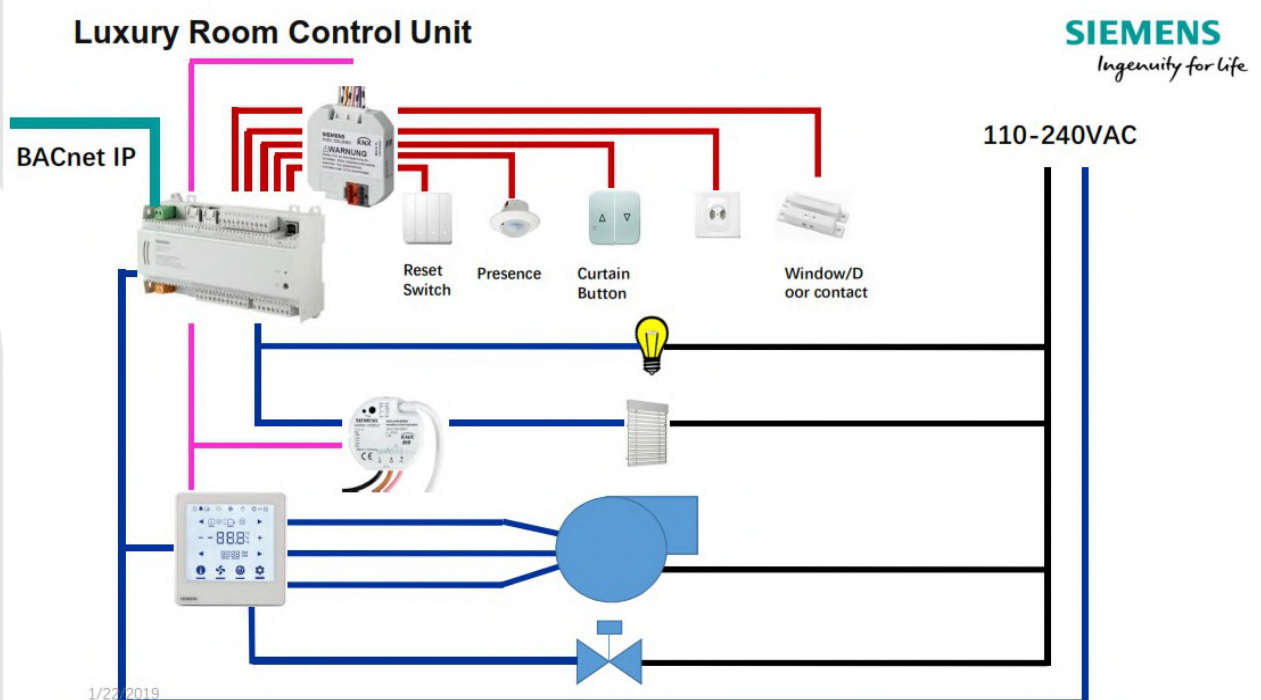
GRMS support tools to bring customer satisfaction, thereby increasing loyalty to the hotel, thereby increasing revenue for investors.

In addition, the GRMS system also helps investors save energy significantly from 20% to 50%, through the energy control system in the room.

The heart of a smart hotel room management system is the Room Control Unit (RCU). The RCU controller receives the signals from the bedside control panel, the touch screen (Tablet), the sensors (motion sensor, door contact) and gives the control signal of the internal electrical system. rooms such as: lights, air conditioner, do not disturb / clean room signals. The RCU controller allows the hotel to efficiently manage the living room's energy consumption and respond to customer needs, thereby offering better services to increase customer satisfaction. Features that the RCU controller offers:

- Lighting controls
- Control the curtains
- Control ventilation
- Integrated calling Room Cleaning / Do Not Disturb
- Control by user scenario and timed timer.

The RCU room control system is integrated into the central control system of the hotel (Properties Management System - PMS) to help operators understand room conditions as well as understand customer needs and manage energy.



SMARTHOME - Zigbee standard

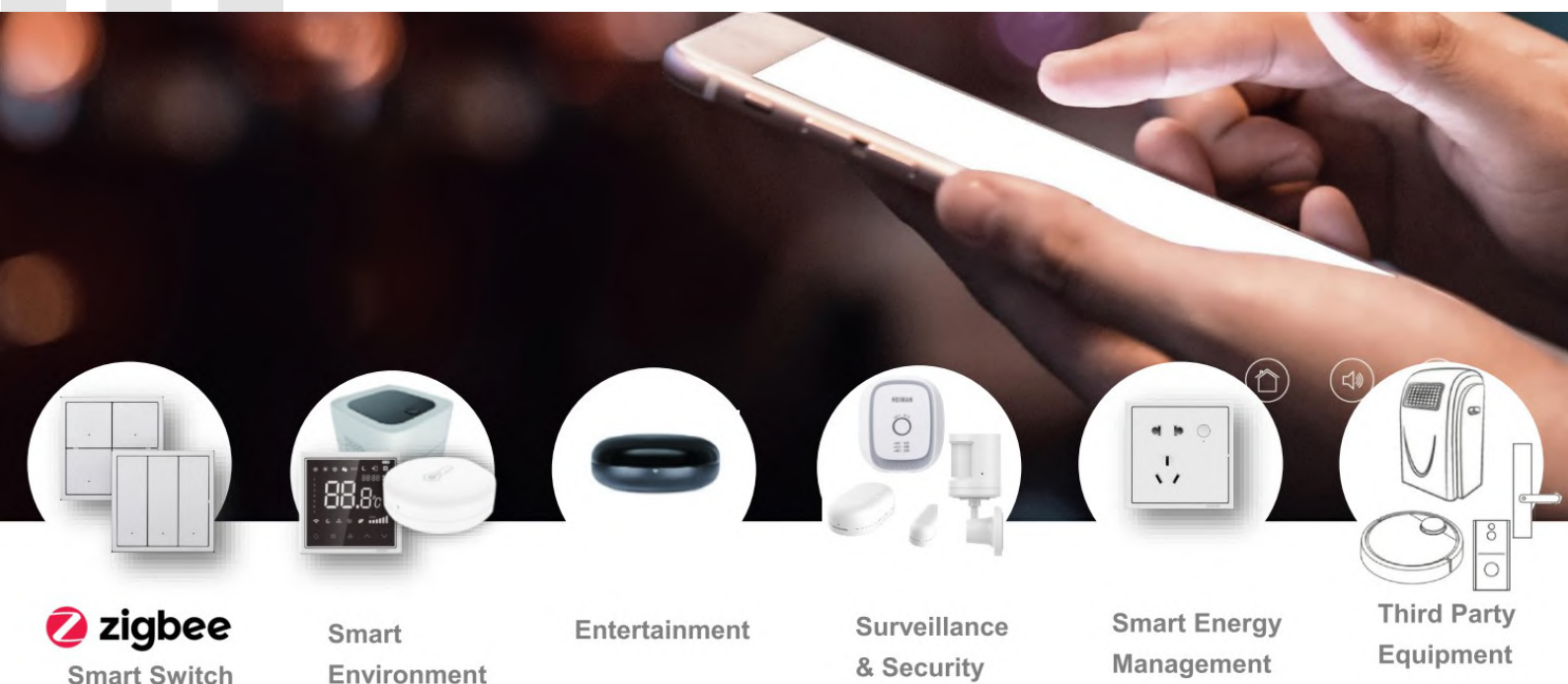
Zigbee 3.0 and Zigbee is the IEEE 802.15.4 personal network area standard. It is seen as an alternative to Wi-Fi and Bluetooth for a few applications that include low-energy devices that don't need a lot of bandwidth - like smart indoor sensor systems.

For example, you have a Zigbee powered bulb and light switch. If you want the switch to be able to control the light bulb, use a Zigbee network even though the two devices are from different manufacturers. Just make sure they can understand the same common language so that there are no barriers to communication.

Zigbee doesn't focus too much on connection points. For example, sending data through a Bluetooth port between one high-powered device and another high-power device over a short range, the Zigbee network works fine.

In fact, when using multiple Zigbee enabled devices in the smart home system, there is still a problem where the device cannot connect, due to too many other devices wanting to connect to the controller. center. That is why you need to use devices with wireless connection protocol to not make the system cluttered and cumbersome.

With the renovation of your old electrical system to a smart system without having to destroy the zigbee is the most suitable option and with the right budget.



zigbee
Smart Switch

Smart
Environment

Entertainment

Surveillance
& Security

Smart Energy
Management

Third Party
Equipment

PROJECT



SYCAMORE BINH DUONG

Location : Binh Duong province, Vietnam

Investor : CapitaLand

PJT scale: Clubhouse

Scope : Indoor, Landscape, Façade





FOUR SEASONS HOTEL

Location : Ha Noi capital, Vietnam

Investor : BRG Group

PJT scale: 100 Rooms luxury, hotel 6*

Scope : Indoor lighting

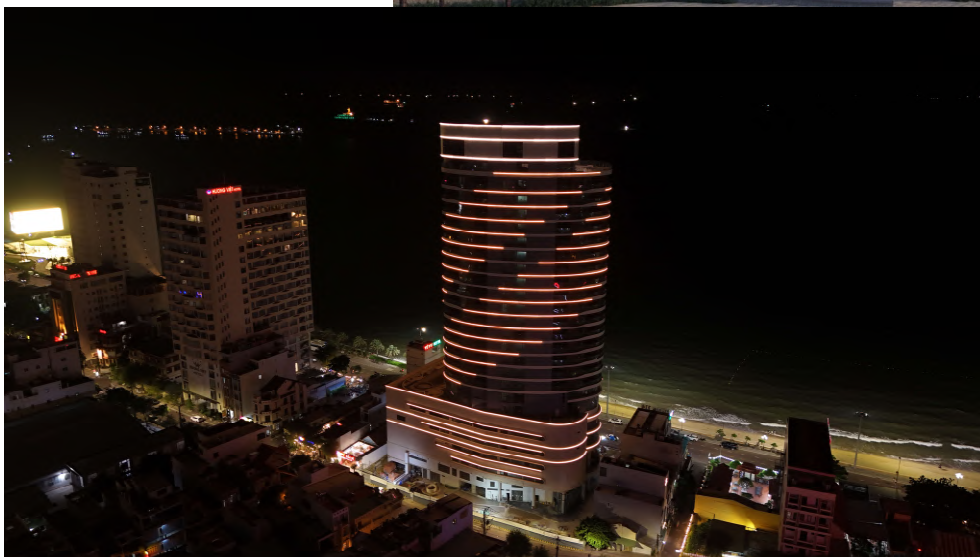
L'AVENIR QUY NHON

Location : Binh Dinh province, Vietnam

Investor : Anh Vy Co., Ltd

PJT scale: 27 Level, hotel 4*

Scope : Façade lighting



Danang International Airport

Location : Da Nang City, Vietnam

Investor : AHT JSC

PJT scale: Interior renovation

Scope : Indoor lighting





British University Vietnam

Location : Hung Yen Province, Vietnam

Investor : BUW Vietnam

PJT scale: 6,5ha

Scope : Indoor & Outdoor lighting



KP AEROSPACE VN

Location : Da Nang City, Vietnam

Investor : KP Aerospace Vietnam

PJT scale: 1,3ha

Scope : Indoor & Outdoor lighting





HA NOI CHILDREN PARK

Location : Ha Noi capital, Vietnam
 Investor : Hanoi Civil Construction
 Investment Project Management
 Scope : Indoor lighting

DONG ANH GYMNASIUM

Location : Ha Noi capital, Vietnam
 Investor : Dong Anh District Construction
 Investment Project Management
 Scope : Indoor lighting





FLAMINGO HAI TIEN

Location : Thanh Hoa province, Vietnam
 Investor : Flamingo Group
 PJT scale: 600 apartments, 330 shophouses
 Scope : Indoor & Outdoor lighting

TAM DAO GRAND VICTORY HOTEL

Location : Vinh Phuc province, Vietnam
 Investor : Tam Dao Tourism Service Co., Ltd
 PJT scale: 250 rooms, 13 floors & 2 basements
 Scope : Indoor lighting





HO GUOM OPERA

Location : Ha Noi capital, Vietnam
 Investor : Logistics Department -
 Ministry of Public Security
 Scope : Indoor & Outdoor lighting

CAO BANG MUSEUM

Location : Cao Bang province, Vietnam
 Investor : Investment and Construction
 Project Management
 Scope : Indoor & Outdoor lighting



Katsutoshi Grand House

Location : Da Nang City, Vietnam
Investor : Thanh Dat Group
PJT scale: 2 Basements + 22 Floors
Scope : Indoor lighting



MALIBU HOI AN

Location : Quang Nam province, Vietnam
Investor : BCG Group
PJT scale: 96 Villas
Scope : Indoor & Outdoor lighting





HOI AN D'OR

Location : Quang Nam province, Vietnam

Investor : BCG Group

PJT scale: 52 Villas, Hotel, Shophouse, ...

Scope : Indoor & Outdoor lighting



SWAN LAKE ONSEN

Location : Ecopark, Hung Yen province

Investor : Ecopark Group

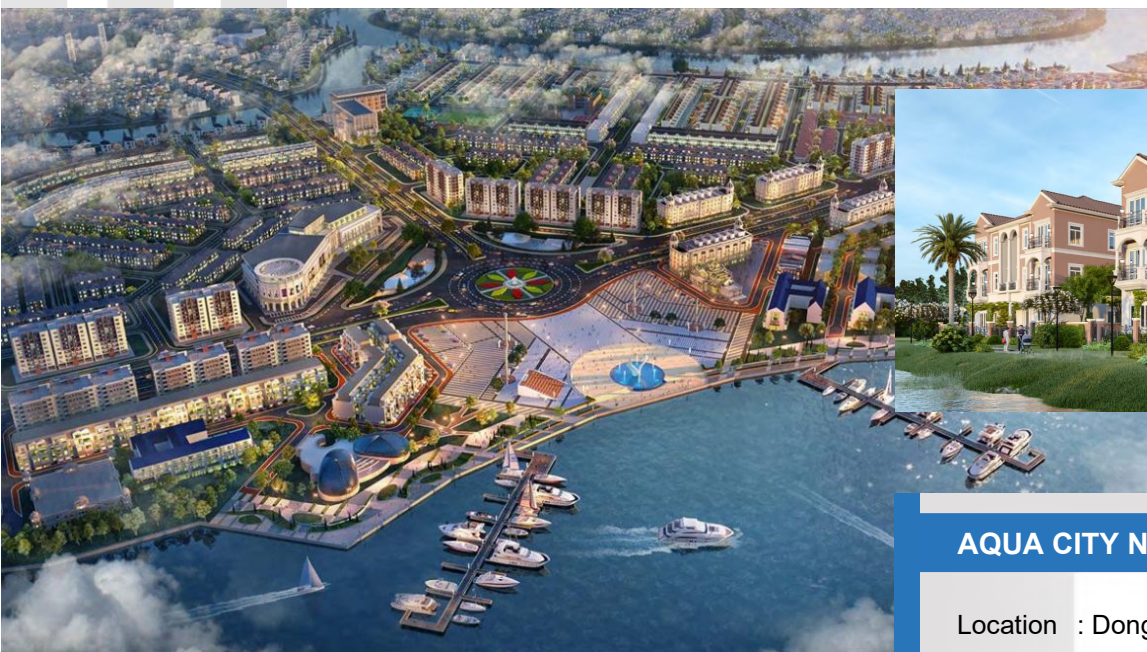
PJT scale: Onsen Park

Scope : Indoor & Outdoor lighting



BA DEN HILL

Location : Tay Ninh province, Vietnam
 Investor : SUN Group
 PJT scale: Indoor Zone B
 Scope : Indoor lighting



AQUA CITY NOVOLAND

Location : Dong Nai province, Vietnam
 Investor : Novoland Group
 PJT scale: Maison Villa
 Scope : Indoor lighting

SOJO HOTEL DA NANG

Location : Da Nang City, Vietnam
 Investor : TNG Holdings Vietnam
 PJT scale: 10 level, 106 rooms hotel
 Scope : Indoor lighting & Solution



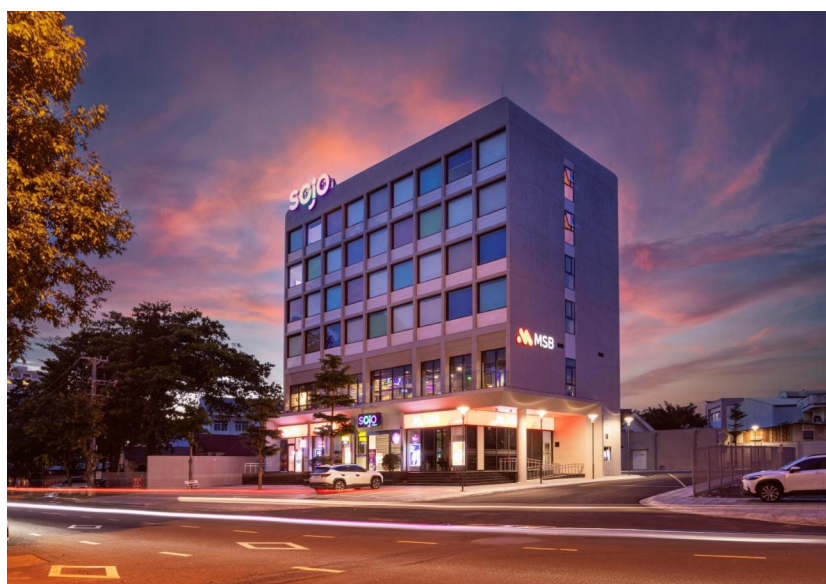
SOJO HOTEL TAM KY

Location : Quang Nam province, Vietnam
 Investor : TNG Holdings Vietnam
 PJT scale: 10 level, 106 rooms hotel
 Scope : Indoor lighting & Solution



SOJO HOTEL CAN THO

Location : Can Tho City, Vietnam
 Investor : TNG Holdings Vietnam
 PJT scale: 12 level, 130 rooms hotel
 Scope : Indoor lighting & Solution



SOJO HOTEL DAK LAK

Location : Dak Lak province, Vietnam
 Investor : TNG Holdings Vietnam
 PJT scale: 7 level, 98 rooms hotel
 Scope : Indoor lighting & Solution



SOJO HOTEL LANG SON

Location : Lang Son province, Vietnam
 Investor : TNG Holdings Vietnam
 PJT scale: 11 level, 119 rooms hotel
 Scope : Indoor lighting & Solution



SOJO HOTEL HOA BINH

Location : Hoa Binh province, Vietnam
 Investor : TNG Holdings Vietnam
 PJT scale: 10 level, 114 rooms hotel
 Scope : Indoor lighting & Solution



SOJO HOTEL HA LONG

Location : Quang Ninh province, Vietnam

Investor : TNG Holdings Vietnam

PJT scale: 10 level, 90 rooms hotel

Scope : Indoor lighting & Solution

SOJO HOTEL VIET TRI

Location : Phu Tho province, Vietnam

Investor : TNG Holdings Vietnam

PJT scale: 8 level, 105 rooms hotel

Scope : Indoor lighting & Solution





SOJO HOTEL HAU GIANG

Location : Hau Giang province, Vietnam

Investor : TNG Holdings Vietnam

PJT scale: 11 level, 114 rooms hotel

Scope : Indoor lighting & Solution

SOJO HOTEL LAO CAI

Location : Lao Cai province, Vietnam

Investor : TNG Holdings Vietnam

PJT scale: 11 level, 134 rooms hotel

Scope : Indoor lighting & Solution





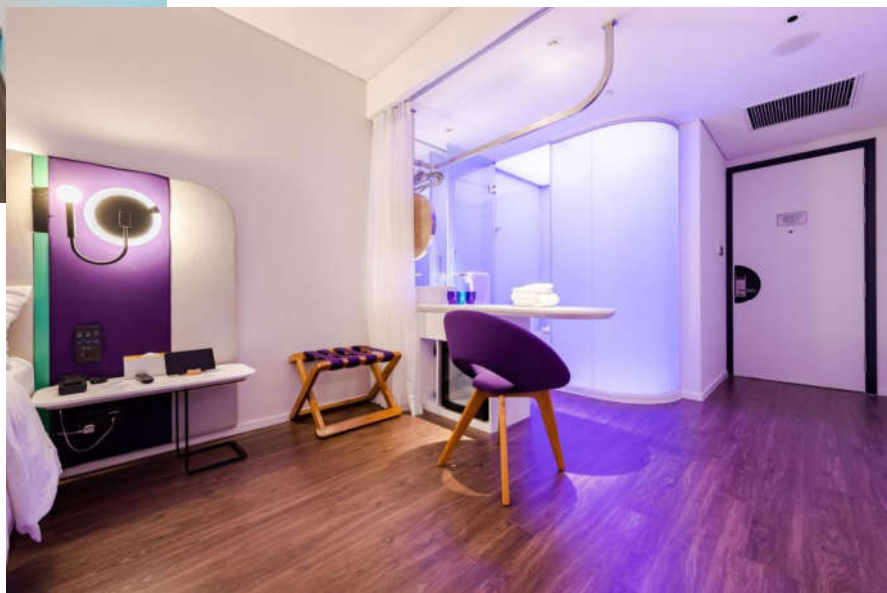
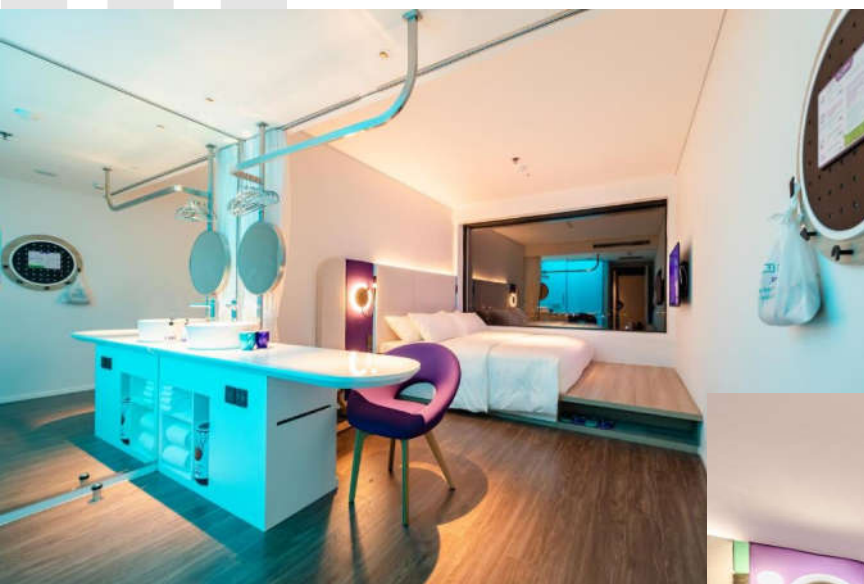
SOJO HOTEL GA HA NOI

Location : Ha Noi city, Vietnam

Investor : TNG Holdings Vietnam

PJT scale: 15 level, 129 rooms hotel

Scope : Indoor lighting & Solution





SOJO HOTEL BAC GIANG

Location : Bac Giang province, Vietnam
 Investor : TNG Holdings Vietnam
 PJT scale: 15 level, 110 rooms hotel
 Scope : Indoor lighting & Solution



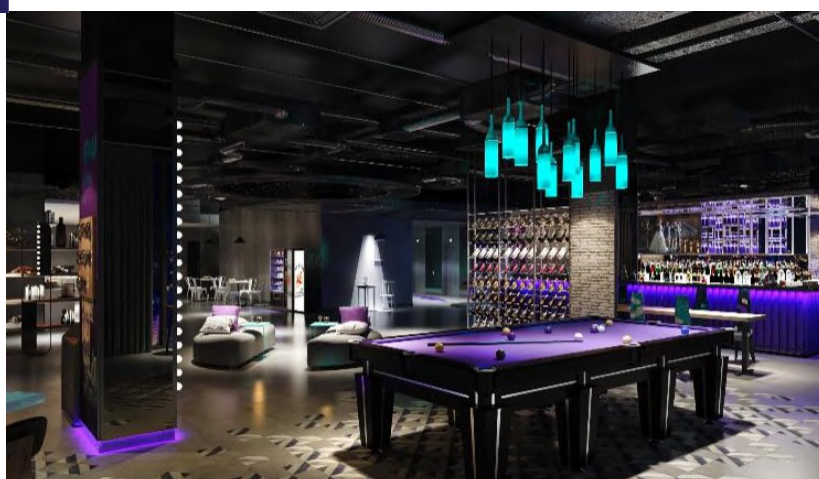
SOJO HOTEL THAI BINH

Location : Thai Binh province, Vietnam

Investor : TNG Holdings Vietnam

PJT scale: 15 level, 120 rooms hotel

Scope : Indoor lighting & Solution



SOJO HOTEL NAM DINH

Location : Nam Dinh province, Vietnam

Investor : TNG Holdings Vietnam

PJT scale: 11 level, 90 rooms hotel

Scope : Indoor lighting & Solution



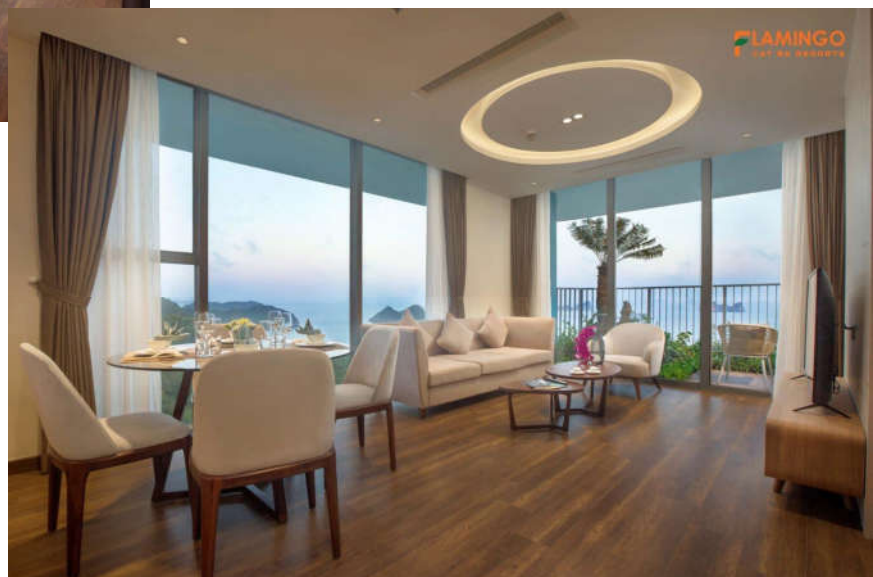
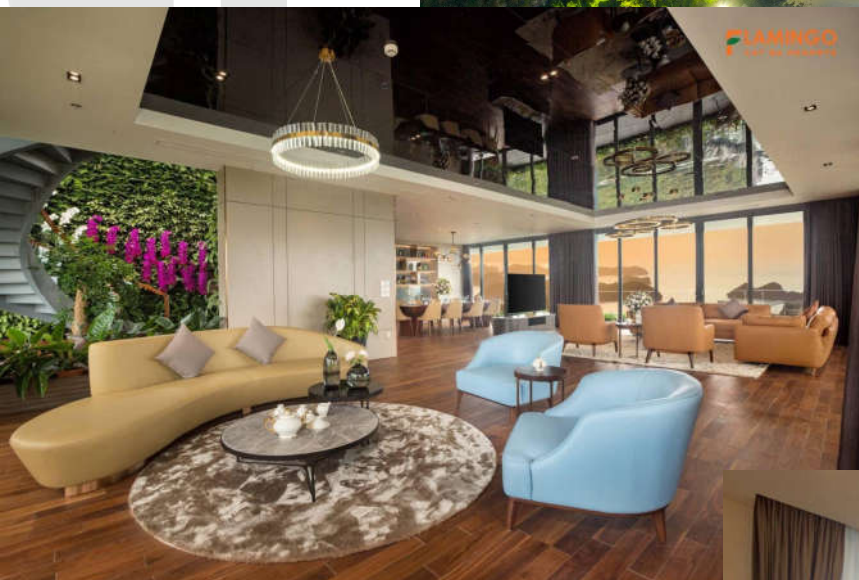
SOJO HOTEL HA NOI

Location : Ha Noi city, Vietnam

Investor : TNG Holdings Vietnam

PJT scale: Mockup Room

Scope : Indoor lighting & Solution



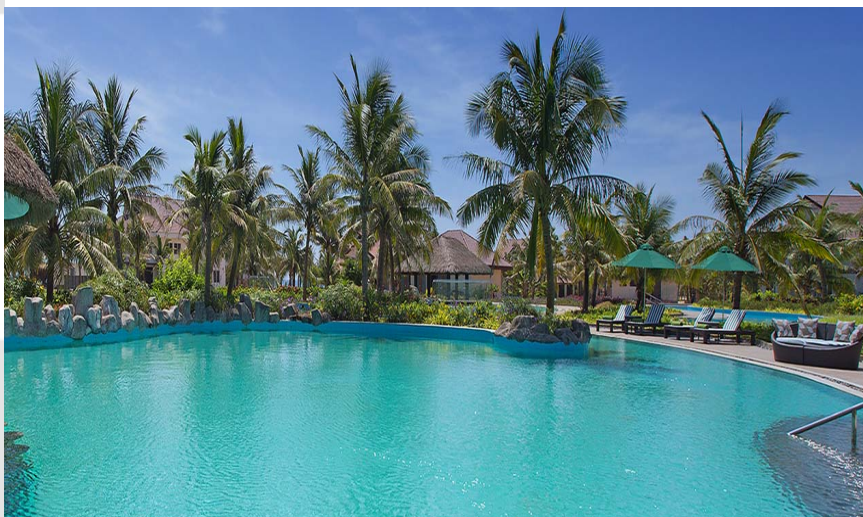
FLAMINGO CAT BA

Location : Hai Phong province, Vietnam

Investor : Flamingo Group

PJT scale: 3 Block, 680 rooms

Scope : Penhouse & Indoor lighting



TUI BLUE NAM HOI AN

Location : Quang Nam province, Vietnam

Investor : TUI Group – Germany

PJT scale: Hotel & resort, 318 rooms

Scope : Indoor & Outdoor lighting



Huong An Vien Cemetery Park

Location : Thua Thien Hue province, Vietnam

Investor : VIF An Loc JSC

PJT scale: Cemetery Part 52ha

Scope : Reception House

DUY TAN UNIVERSITY

Location : Da Nang city, Vietnam

Investor : Duy Tan University

PJT scale: University, campus 3

Scope : Conference room





TMS QUY NHON

Location : Quy Nhon city, Binh Dinh province, Vietnam

Investor : TMS Group

PJT scale: 42 level, 328 rooms hotel, 746 rooms condotel

Scope : Indoor & Landscape lighting



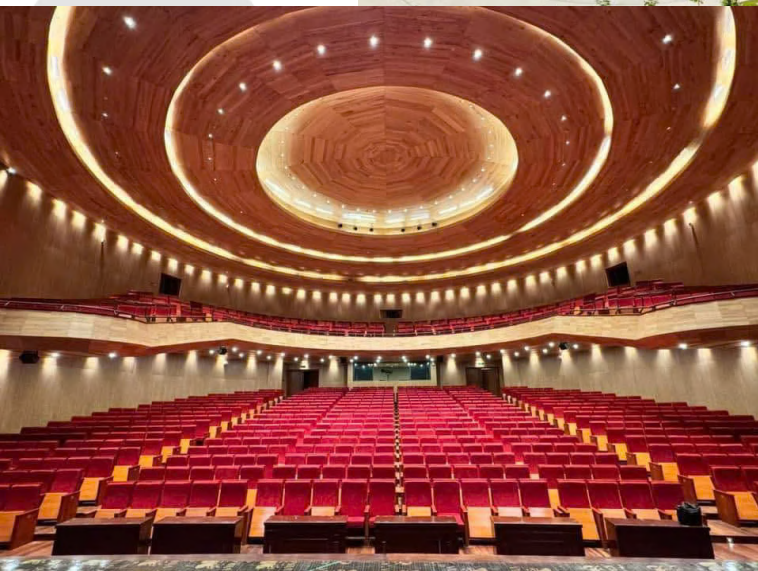
PULLMAN PHU QUOC

Location : Phu Quoc, Kien Giang province

Investor : MILTON Holdings

PJT scale: 41 villa, 291 rooms hotel

Scope : Indoor lighting



SONG HUONG THEATRE

Location : TT Hue province, Vietnam

Investor : Ministry of Culture, Sports & Tourism, Vietnam

Scope : Indoor lighting



SEL DE MER HOTEL

Location : Da Nang city, Vietnam
Investor : Thien An Thanh Trading Service
PJT scale: 26 level, 245 rooms hotel
Scope : Indoor & Outdoor lighting

PHUONG DONG HOSPITAL

Location : Ha Noi city, Vietnam
Investor : Intracom Group
PJT scale: 1,000 beds
Scope : Indoor & Outdoor lighting





SAPA JADE HILL RESORT

Location : Sapa, Lao Cai province, Vietnam

Investor : Truong Giang Sapa JSC.

PJT scale: 136 villa, hotel 4*

Scope : Indoor & Outdoor lighting

CHICLAND HOTEL

Location : Da Nang City, Vietnam

Investor : Chicland JSC

PJT scale: 21 level, 153 room, hotel 5*

Scope : Outdoor lighting



SEPON BLUE HOTEL

Location : Da Nang city, Vietnam
Investor : Thien Phuc Hoang Gia Co., Ltd
PJT scale: 12 level
Scope : Indoor & Outdoor lighting



LAVISTA HOTEL

Location : Da Nang city, Vietnam
Investor : Phu Kim Travel & Service Co., Ltd
PJT scale: 27 level, 252 rooms
Scope : Outdoor lighting





HOA BINH GREEN

Location : Da Nang city, Vietnam

Investor : Hoa Binh Co., Ltd

PJT scale: 2200m2, 10 wonders of the world

Scope : Solution & Outdoor lighting



FEED MILL FACTORY

Location : Nghe An province, Vietnam

Investor : TH True Milk

PJT scale: Dairy farm

Scope : Indoor lighting

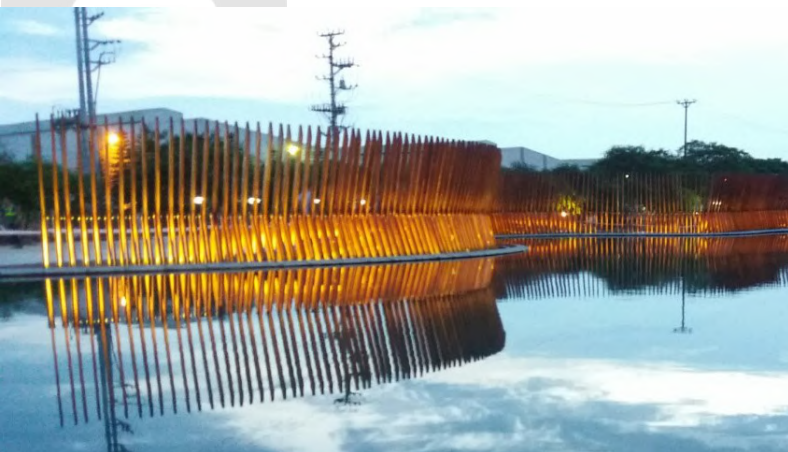
KEYSHEN FACTORY

Location : Bac Ninh province, Vietnam

Investor : Keysheen Vietnam

PJT scale: 8 block workshops & office

Scope : Indoor & Outdoor lighting





DA NANG HI-TECH PARK

Location : Da Nang City, Vietnam

Investor : Department of Construction of DN

PJT scale: 1.844 ha

Scope : Outdoor lighting

BA TUNG RESIDENTIAL AREA

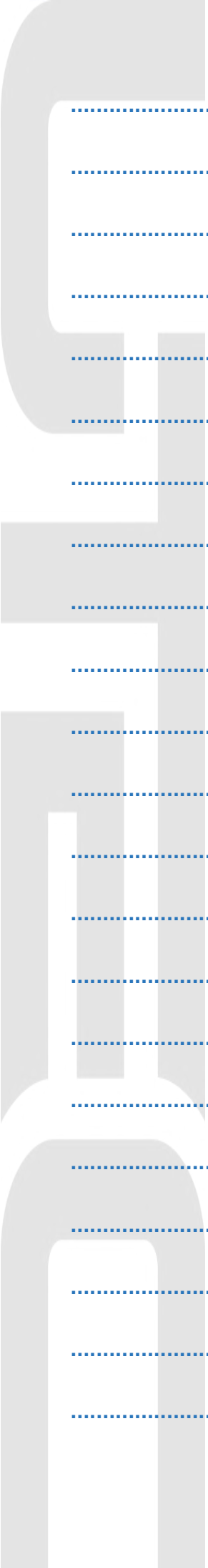
Location : Da Nang City, Vietnam

Investor : Department of Construction of DN

PJT scale: Residential area

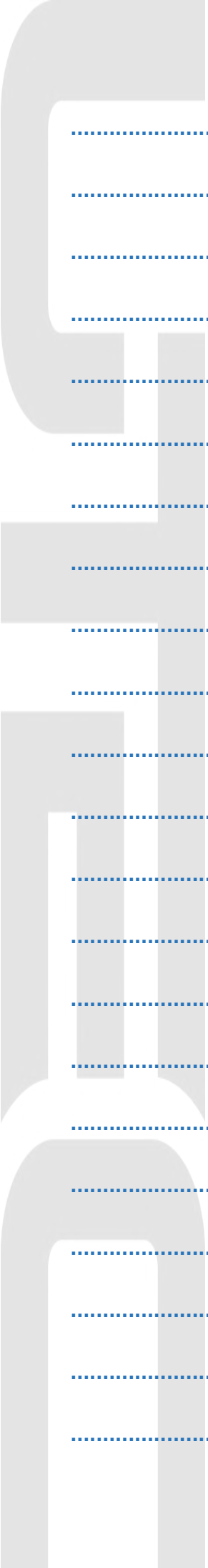
Scope : Outdoor lighting





Handwriting practice area with 20 horizontal blue dotted lines.





Handwriting practice lines consisting of 20 horizontal blue dotted lines.





Lighting & solutions

-  **+84 901 050 060**
-  **utec@utec.vn**
-  **<https://utec.vn>**